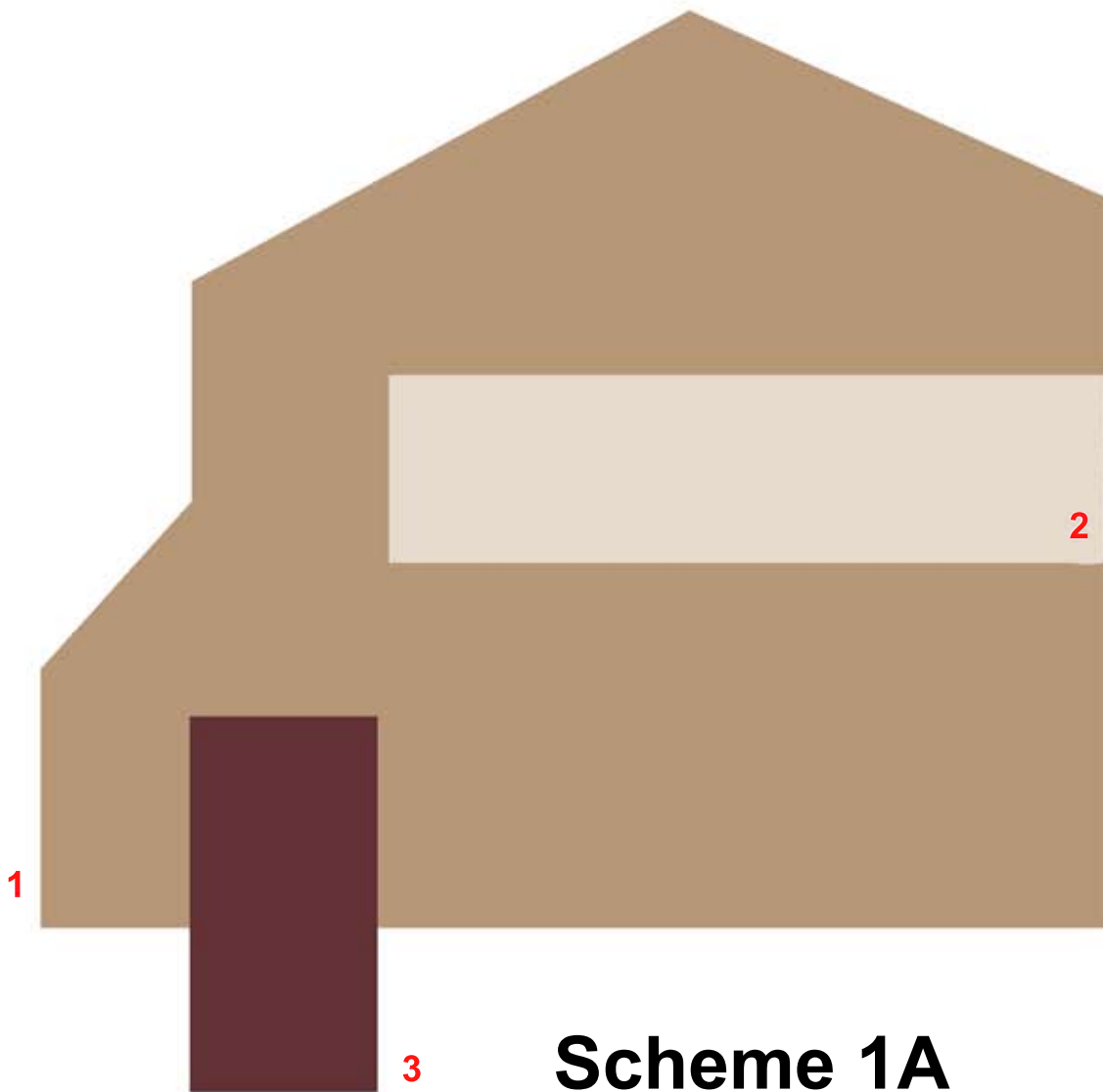


Green Briar Village - Single Homes

Paint Scheme #1A



- 1** Body
- 2** Trim
- 3** Door

Scheme 1A

SW 9097 Soft Fawn

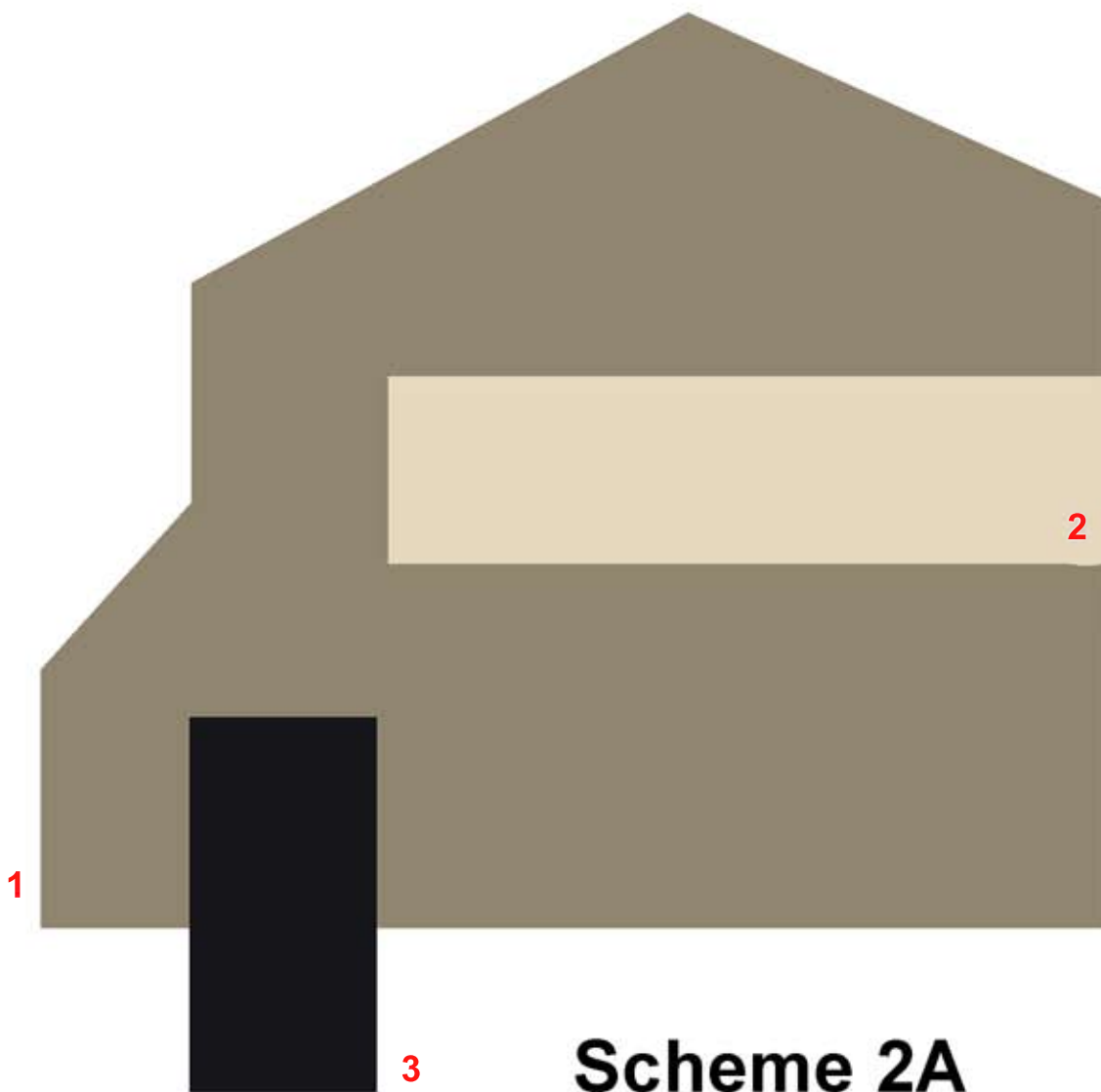
SW 7552 Bauhaus Buff

SW 6027 Cordovan

The colors presented here are for documentation and general comparison only. Paint colors do not render accurately on electronic screens (computers, tablets, phones). We highly recommend choosing colors for your painting project based on the physical paint chip/swatch available from the paint manufacturer or the official paint book. Under NO CIRCUMSTANCES should you attempt to match physical paint to what is displayed on your screen. You will be held responsible for ensuring that your applied house paint matches the physical paint chip/swatch of the approved color.

Green Briar Village - Single Homes

Paint Scheme #2A



Scheme 2A

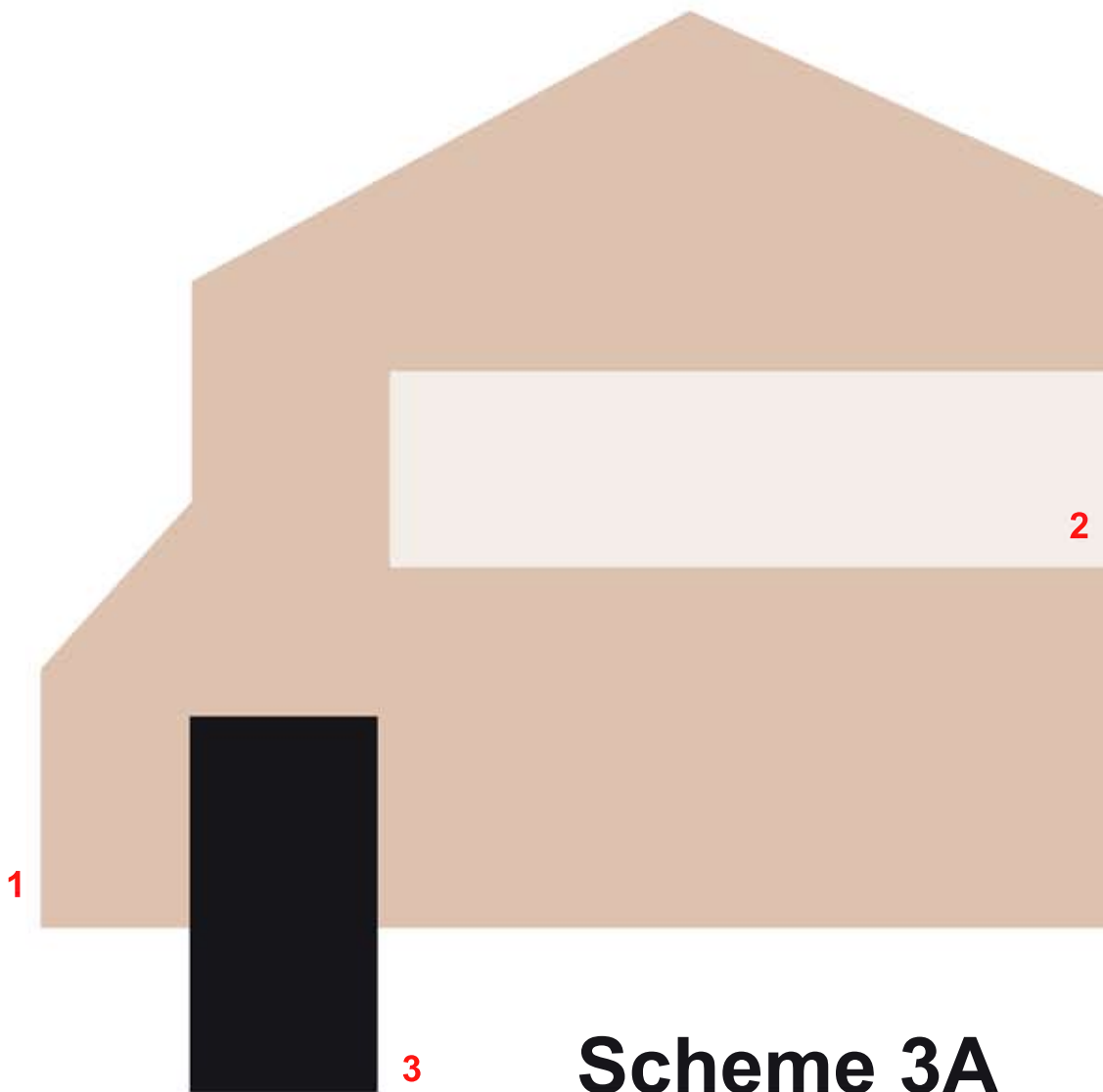
- 1 Body
- 2 Trim
- 3 Door

SW 7737 Meadow Trail
SW 7574 Echelon Ecru
SW 6258 Tricorn Black

The colors presented here are for documentation and general comparison only. Paint colors do not render accurately on electronic screens (computers, tablets, phones). We highly recommend choosing colors for your painting project based on the physical paint chip/swatch available from the paint manufacturer or the official paint book. Under NO CIRCUMSTANCES should you attempt to match physical paint to what is displayed on your screen. You will be held responsible for ensuring that your applied house paint matches the physical paint chip/swatch of the approved color.

Green Briar Village - Single Homes

Paint Scheme #3A



Scheme 3A

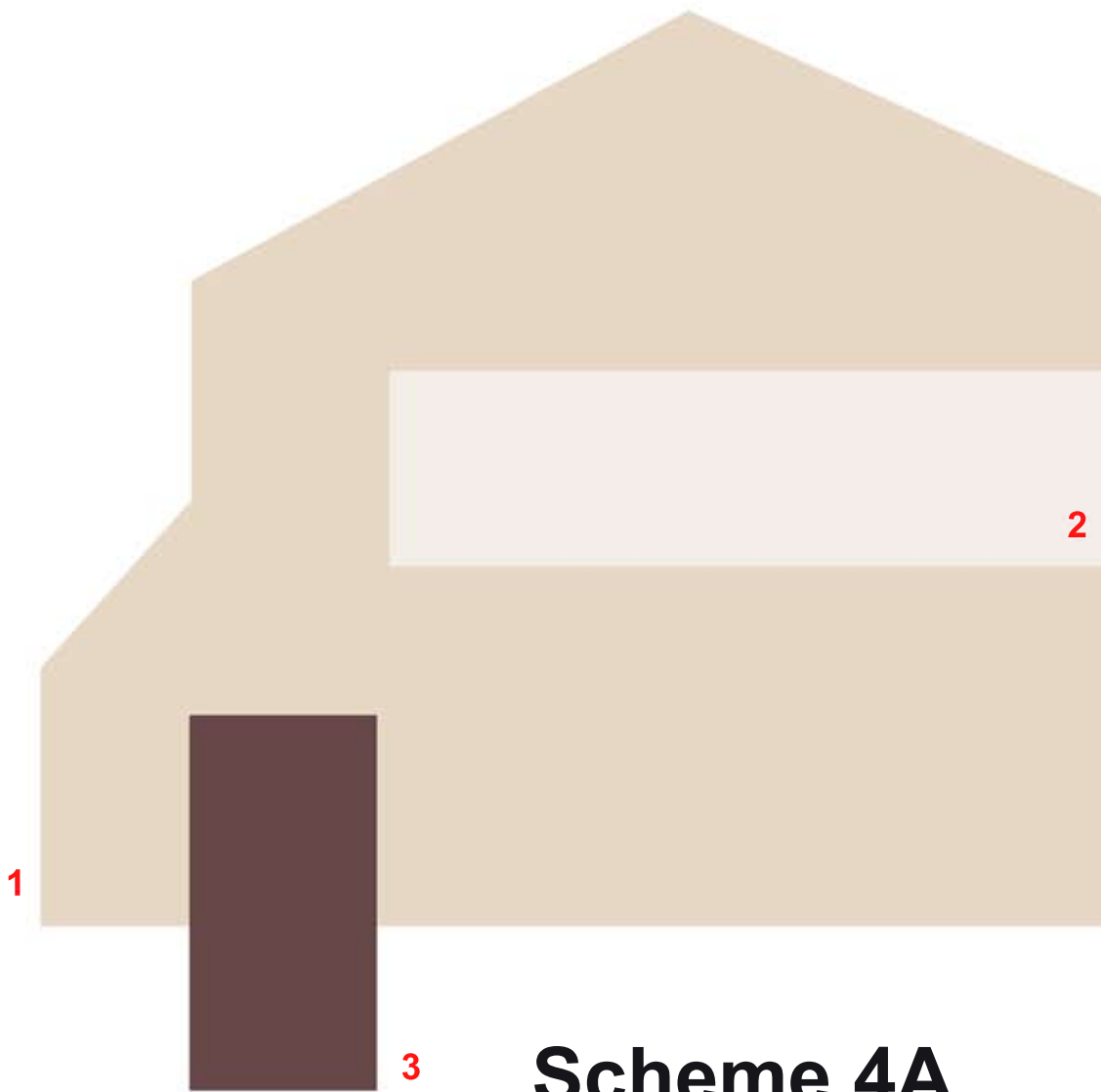
- 1 Body
- 2 Trim
- 3 Door

SW 6093 Familiar Beige
SW 7008 Alabaster
SW 7069 Iron Ore

The colors presented here are for documentation and general comparison only. Paint colors do not render accurately on electronic screens (computers, tablets, phones). We highly recommend choosing colors for your painting project based on the physical paint chip/swatch available from the paint manufacturer or the official paint book. Under NO CIRCUMSTANCES should you attempt to match physical paint to what is displayed on your screen. You will be held responsible for ensuring that your applied house paint matches the physical paint chip/swatch of the approved color.

Green Briar Village - Single Homes

Paint Scheme #4A



- 1** Body
- 2** Trim
- 3** Door

Scheme 4A

SW 7572 Lotus Pod

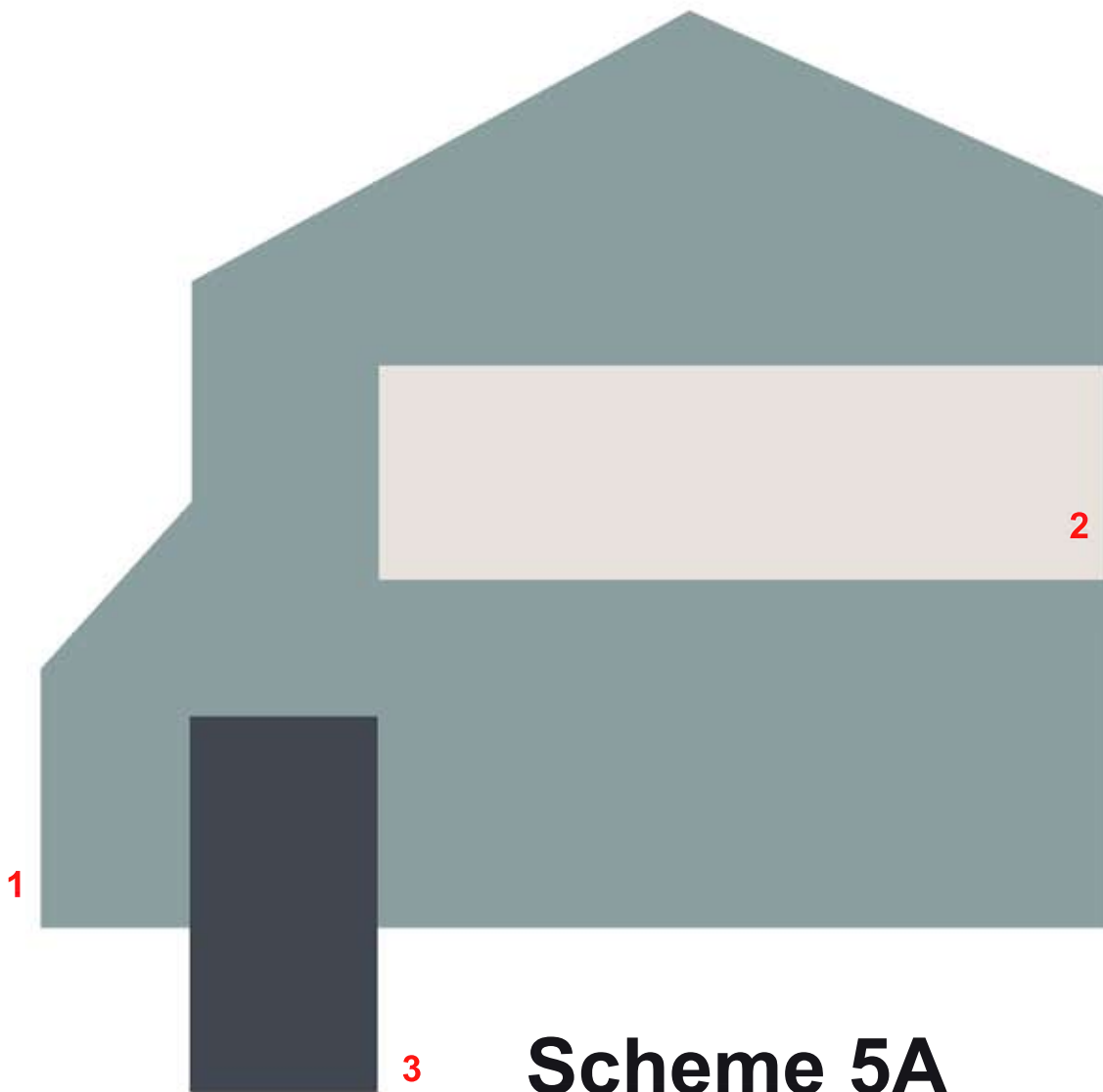
SW 7008 Alabaster

SW 7595 Sommelier

The colors presented here are for documentation and general comparison only. Paint colors do not render accurately on electronic screens (computers, tablets, phones). We highly recommend choosing colors for your painting project based on the physical paint chip/swatch available from the paint manufacturer or the official paint book. Under NO CIRCUMSTANCES should you attempt to match physical paint to what is displayed on your screen. You will be held responsible for ensuring that your applied house paint matches the physical paint chip/swatch of the approved color.

Green Briar Village - Single Homes

Paint Scheme #5A



- 1 Body
- 2 Trim
- 3 Door

Scheme 5A

SW 9134 Delft

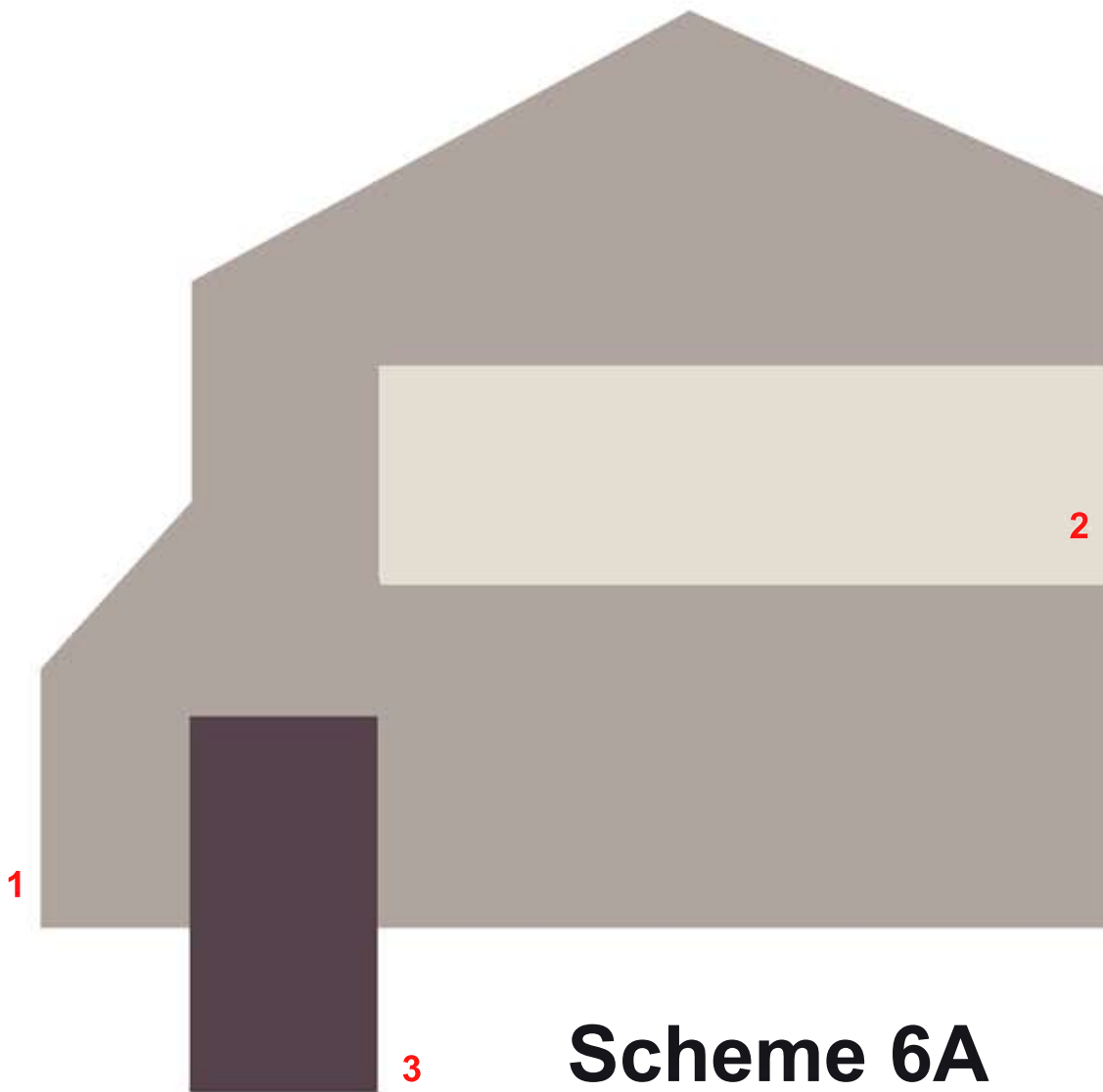
SW 7636 Orgami White

SW 7076 Cyberspace

The colors presented here are for documentation and general comparison only. Paint colors do not render accurately on electronic screens (computers, tablets, phones). We highly recommend choosing colors for your painting project based on the physical paint chip/swatch available from the paint manufacturer or the official paint book. Under NO CIRCUMSTANCES should you attempt to match physical paint to what is displayed on your screen. You will be held responsible for ensuring that your applied house paint matches the physical paint chip/swatch of the approved color.

Green Briar Village - Single Homes

Paint Scheme #6A



Scheme 6A

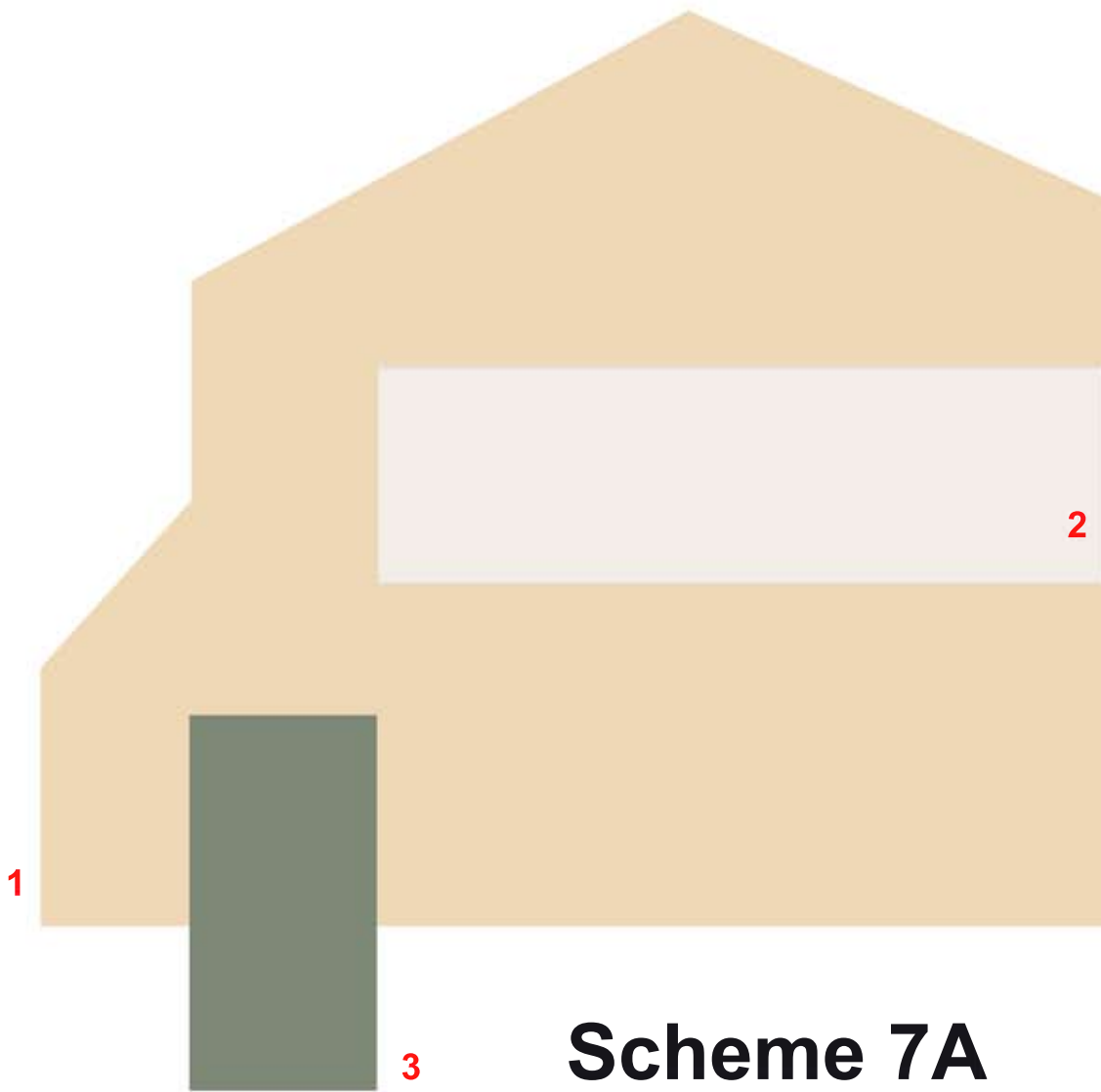
- 1 Body
- 2 Trim
- 3 Door

SW 7024 Functional Gray
SW 7637 Oyster White
SW 6272 Plum Brown

The colors presented here are for documentation and general comparison only. Paint colors do not render accurately on electronic screens (computers, tablets, phones). We highly recommend choosing colors for your painting project based on the physical paint chip/swatch available from the paint manufacturer or the official paint book. Under NO CIRCUMSTANCES should you attempt to match physical paint to what is displayed on your screen. You will be held responsible for ensuring that your applied house paint matches the physical paint chip/swatch of the approved color.

Green Briar Village - Single Homes

Paint Scheme #7A



Scheme 7A

- 1 Body
- 2 Trim
- 3 Door

SW 7684 Concord Buff

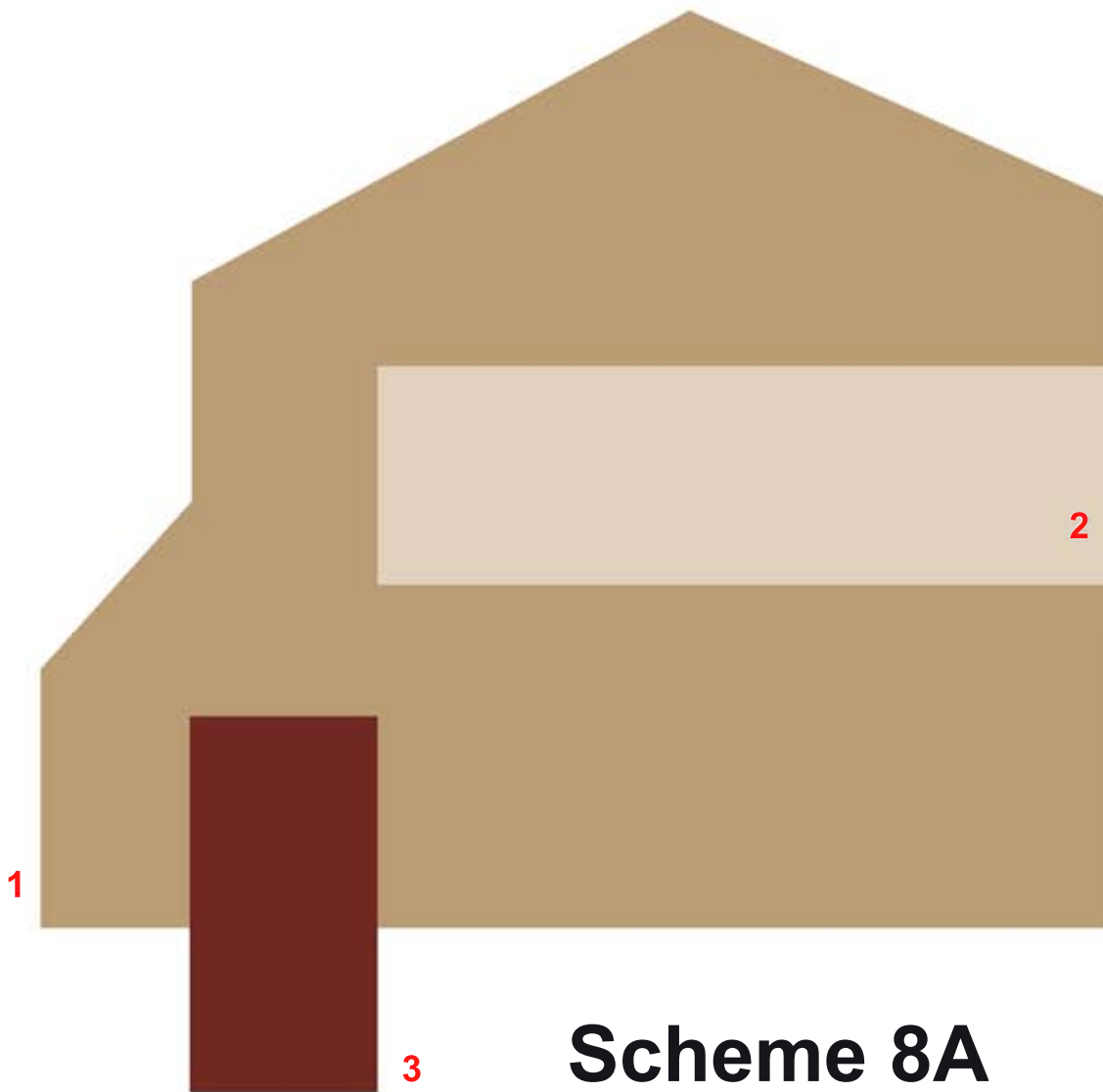
SW 7008 Alabaster

SW 6168 Dried Thyme

The colors presented here are for documentation and general comparison only. Paint colors do not render accurately on electronic screens (computers, tablets, phones). We highly recommend choosing colors for your painting project based on the physical paint chip/swatch available from the paint manufacturer or the official paint book. Under NO CIRCUMSTANCES should you attempt to match physical paint to what is displayed on your screen. You will be held responsible for ensuring that your applied house paint matches the physical paint chip/swatch of the approved color.

Green Briar Village - Single Homes

Paint Scheme #8A



Scheme 8A

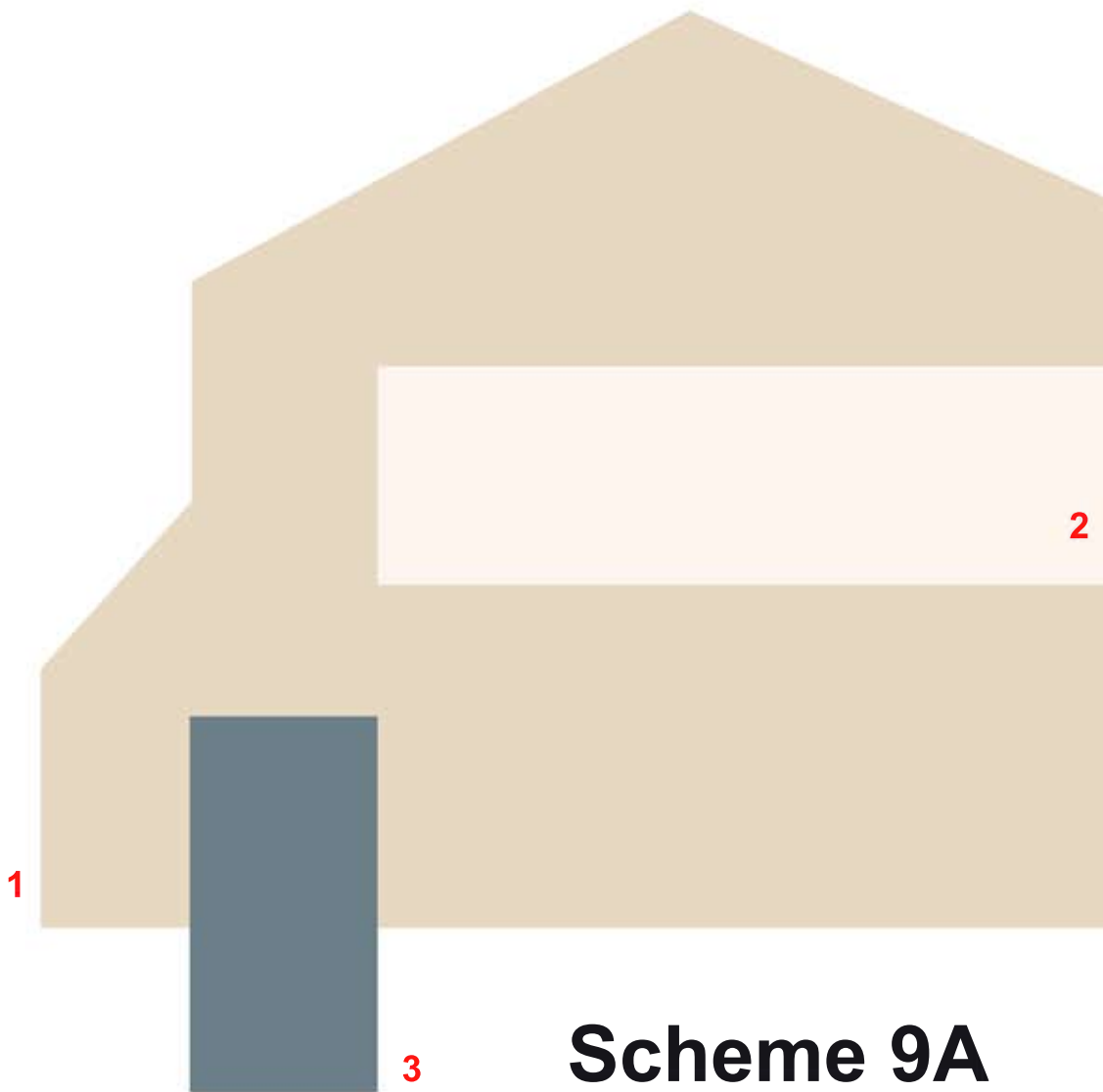
- 1 Body
- 2 Trim
- 3 Door

SW 9025 Coriander Powder
SW 6141 Softer Tan
SW 2802 Rookwood Red

The colors presented here are for documentation and general comparison only. Paint colors do not render accurately on electronic screens (computers, tablets, phones). We highly recommend choosing colors for your painting project based on the physical paint chip/swatch available from the paint manufacturer or the official paint book. Under NO CIRCUMSTANCES should you attempt to match physical paint to what is displayed on your screen. You will be held responsible for ensuring that your applied house paint matches the physical paint chip/swatch of the approved color.

Green Briar Village - Single Homes

Paint Scheme #9A



Scheme 9A

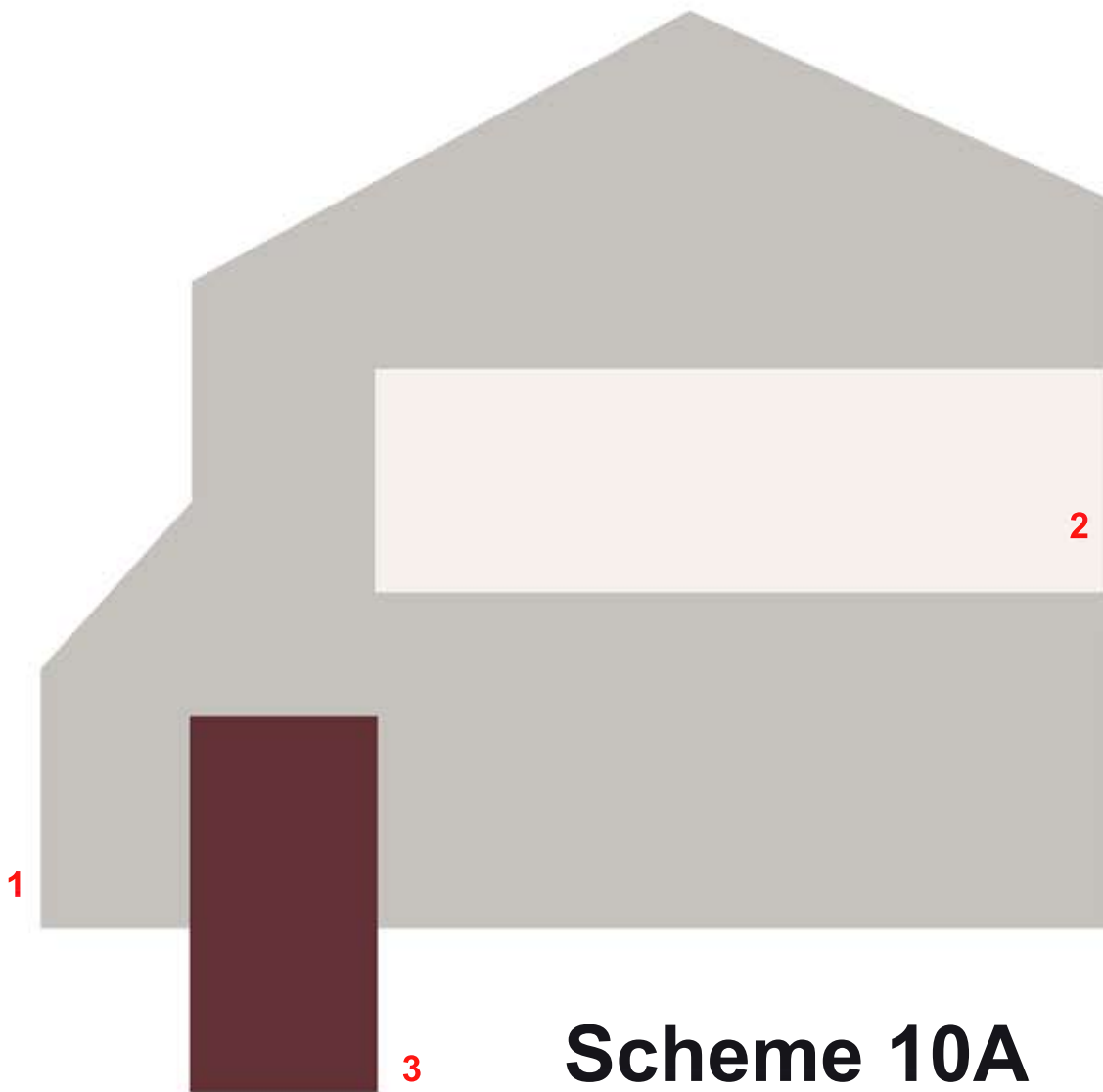
- 1 Body
- 2 Trim
- 3 Door

SW 6155 Rice Grain
SW 6385 Dover White
SW 7619 Labradorite

The colors presented here are for documentation and general comparison only. Paint colors do not render accurately on electronic screens (computers, tablets, phones). We highly recommend choosing colors for your painting project based on the physical paint chip/swatch available from the paint manufacturer or the official paint book. Under NO CIRCUMSTANCES should you attempt to match physical paint to what is displayed on your screen. You will be held responsible for ensuring that your applied house paint matches the physical paint chip/swatch of the approved color.

Green Briar Village - Single Homes

Paint Scheme #10A



- 1 Body
- 2 Trim
- 3 Door

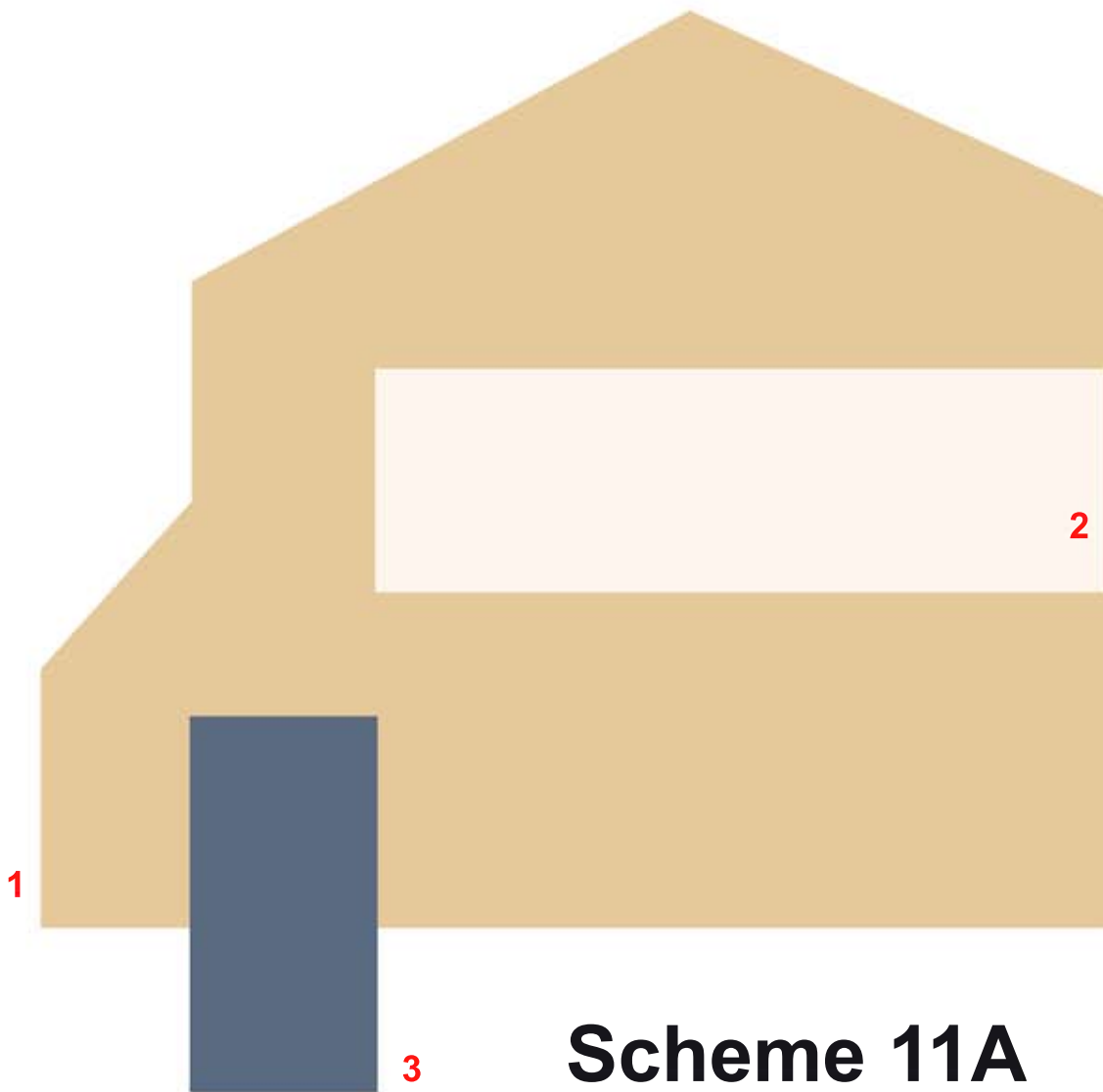
Scheme 10A

SW 7672 Knitting Needles
SW 7004 Snow Bound
SW 6027 Cordovan

The colors presented here are for documentation and general comparison only. Paint colors do not render accurately on electronic screens (computers, tablets, phones). We highly recommend choosing colors for your painting project based on the physical paint chip/swatch available from the paint manufacturer or the official paint book. Under NO CIRCUMSTANCES should you attempt to match physical paint to what is displayed on your screen. You will be held responsible for ensuring that your applied house paint matches the physical paint chip/swatch of the approved color.

Green Briar Village - Single Homes

Paint Scheme #11A



Scheme 11A

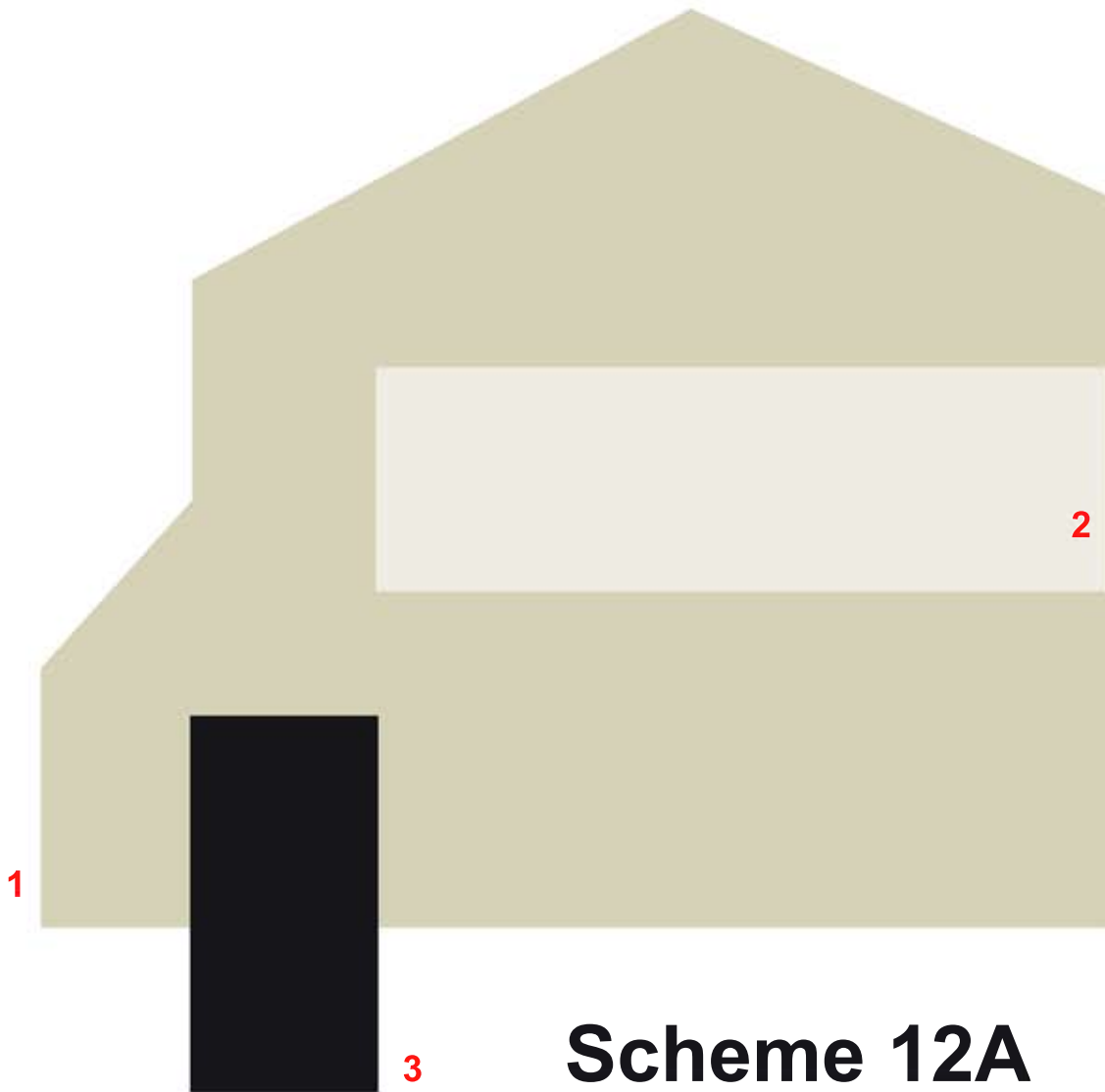
- 1 Body
- 2 Trim
- 3 Door

SW 6128 Blonde
SW 6385 Dover White
SW 0032 Needlepoint Navy

The colors presented here are for documentation and general comparison only. Paint colors do not render accurately on electronic screens (computers, tablets, phones). We highly recommend choosing colors for your painting project based on the physical paint chip/swatch available from the paint manufacturer or the official paint book. Under NO CIRCUMSTANCES should you attempt to match physical paint to what is displayed on your screen. You will be held responsible for ensuring that your applied house paint matches the physical paint chip/swatch of the approved color.

Green Briar Village - Single Homes

Paint Scheme #12A



Scheme 12A

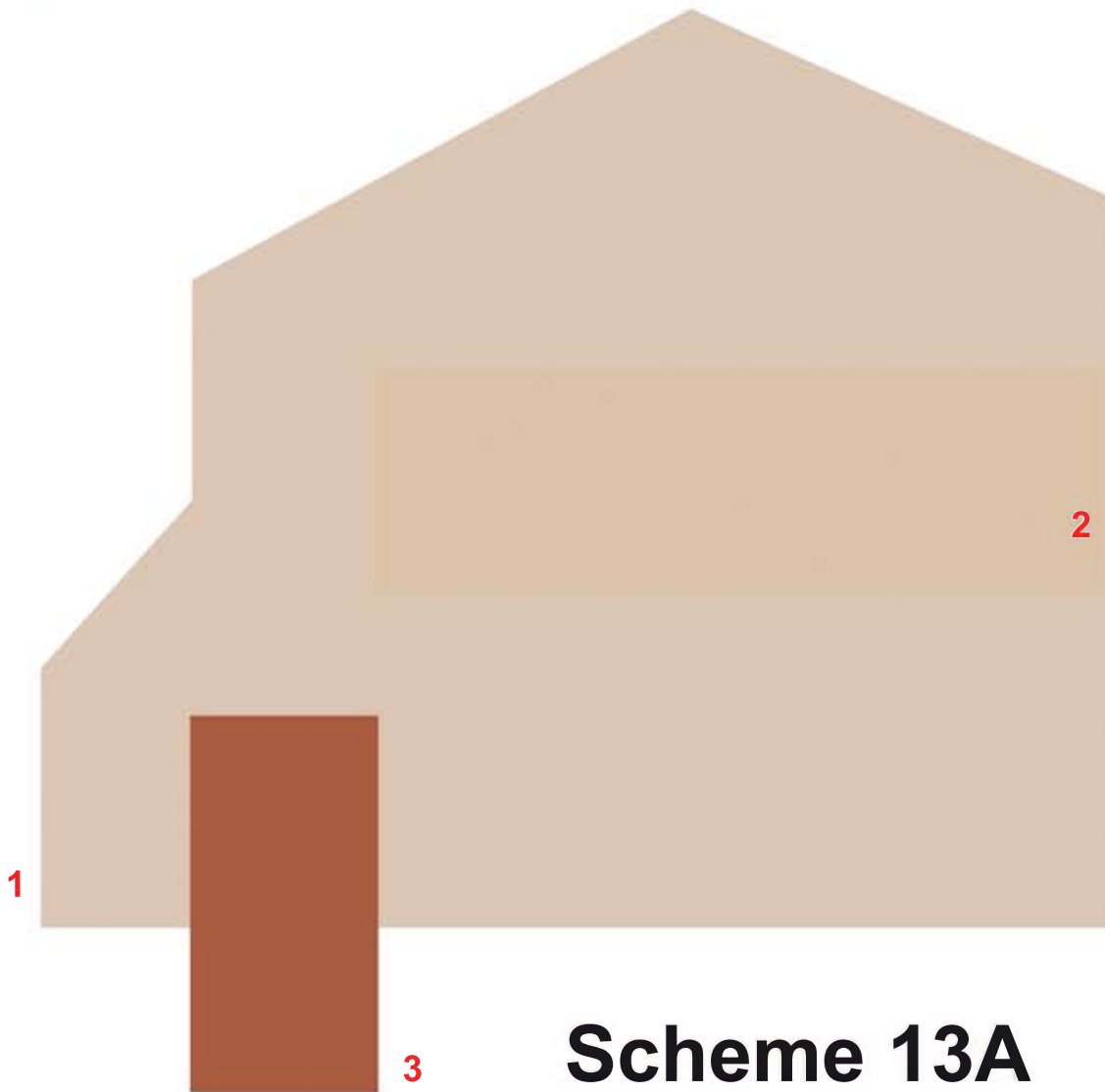
- 1 Body
- 2 Trim
- 3 Door

SW 6164 Svelte Sage
SW 7551 Greek Villa
SW 6258 Tricorn Black

The colors presented here are for documentation and general comparison only. Paint colors do not render accurately on electronic screens (computers, tablets, phones). We highly recommend choosing colors for your painting project based on the physical paint chip/swatch available from the paint manufacturer or the official paint book. Under NO CIRCUMSTANCES should you attempt to match physical paint to what is displayed on your screen. You will be held responsible for ensuring that your applied house paint matches the physical paint chip/swatch of the approved color.

Green Briar Village - Single Homes

Paint Scheme #13A



Scheme 13A

- 1 Body
- 2 Trim
- 3 Door

SW 9094 Paya Arenosa

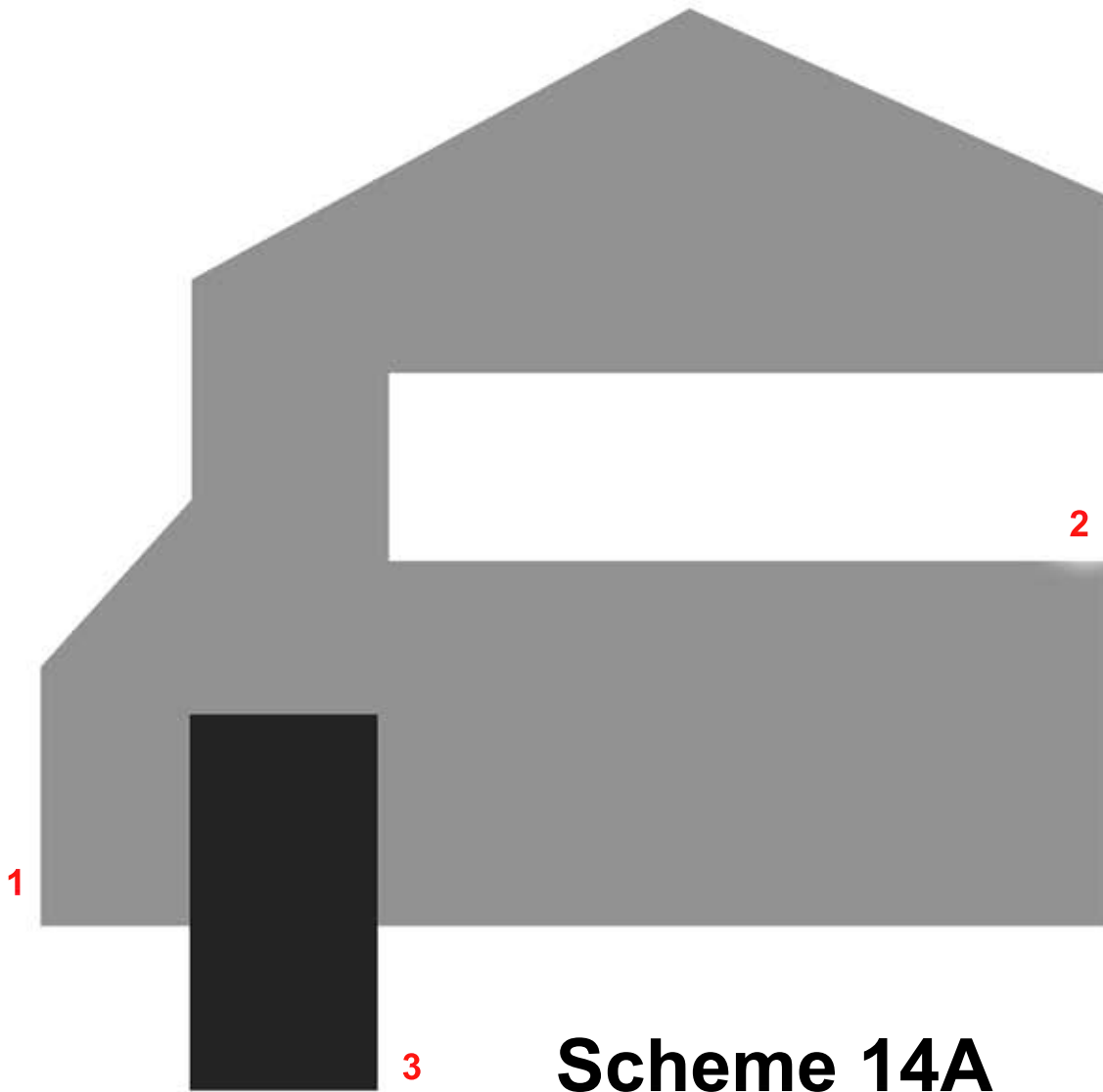
SW 6107 Nomadic Desert

SW 2803 Rookwood Terra Cotta

The colors presented here are for documentation and general comparison only. Paint colors do not render accurately on electronic screens (computers, tablets, phones). We highly recommend choosing colors for your painting project based on the physical paint chip/swatch available from the paint manufacturer or the official paint book. Under NO CIRCUMSTANCES should you attempt to match physical paint to what is displayed on your screen. You will be held responsible for ensuring that your applied house paint matches the physical paint chip/swatch of the approved color.

Green Briar Village - Single Homes

Paint Scheme #14A



- 1** Body
- 2** Trim
- 3** Door

Scheme 14A

SW 9762 African Gray

SW 7008 Alabaster

SW 6258 Tricorn Black

The colors presented here are for documentation and general comparison only. Paint colors do not render accurately on electronic screens (computers, tablets, phones). We highly recommend choosing colors for your painting project based on the physical paint chip/swatch available from the paint manufacturer or the official paint book. Under NO CIRCUMSTANCES should you attempt to match physical paint to what is displayed on your screen. You will be held responsible for ensuring that your applied house paint matches the physical paint chip/swatch of the approved color.